

# RECONASENSE WI-Q INTEGRATION

ReconaSense's new integration to the Dormakaba Wi-Q lock delivers a complete solution while providing system design flexibility. This partnership offers a cost-effective solution that allows users to expand their electronic access control footprint.

## 1. Ease of Setup

When the Gateway is configured in the ReconaSense application it automatically adds 64 points. This cuts down installation time and allows for quick deployment of installed Wi-Q locks.

## 2. Customizable Tile-Based System User Interface

The ReconaSense application offers a customizable touch-based interface that reduces complexity with a visual approach to situational awareness and actionable intelligence with tiles and alerts. The tile is a ReconaSense element that provides a way to perform a task and show information or status in an eye-catching format. Tiles can be configured to perform an action(s) such as control a Wi-Q lock, along with providing door status. The tile can be customized to perform single click as well as right-click functionality. This feature can also be used for touchscreens by utilizing the long-press action. All the tiles can be customized with images and text to provide the user with a visual representation.

## 3. Role or Risk-Based Adaptive Functionality Across Platforms

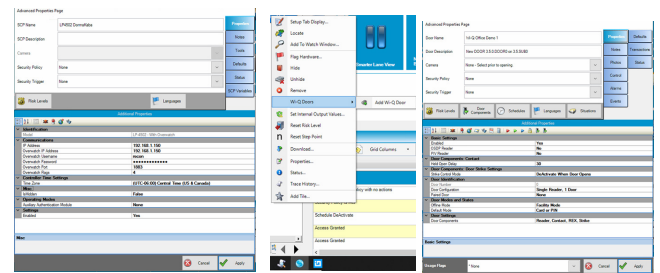
The ReconaSense system provides role vs. risk-based access control. This allows the system user to change security posture from the legacy role-based access control to a risk-based system that supports the ability to adjust access rights based on dynamic security policies including suspicious activity, human activity, video events, and environmental conditions including weather notifications.

# Wi-Q

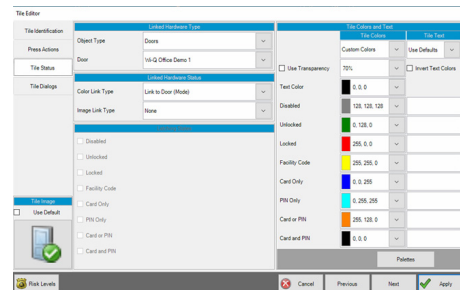
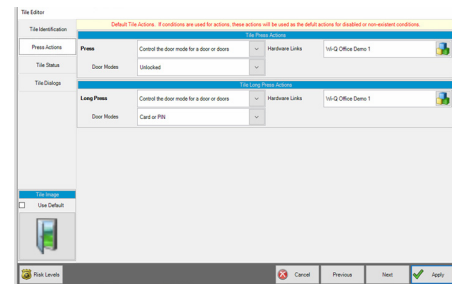
wireless technology

## Benefits

- Manage user access wirelessly
- Supports many reader types
- Scales up to 14,000 credentials per lock
- Performs its own security updates every 60 seconds



1. QUICK DEPLOYMENT



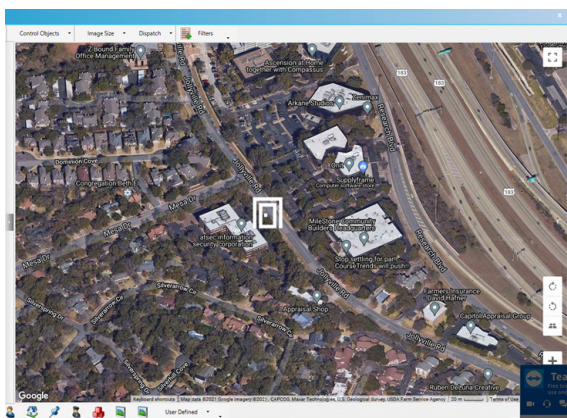
2. CUSTOMIZABLE

#### 4. Mobile Suite (iPhone, Android, and iWatch)

The ReconaSense Mobile Suite extends the organization's access control functionality to a mobile device including iPhone and Android phones along with the iWatch. Tiles can be configured to perform actions when the user is away from their workstation. The mobile functionality arms staff with the tools to "see something and say something" through quick tile-based notifications along with the ability to request assistance if required. The mobile platform supports the reporting of maintenance issues including attaching a photo to the report. It also expands the security team's notification system and allows them to respond quickly and easily to active threats and initiate a lockdown, if needed, with the press of a button on the mobile device.

#### 5. Geospatial Mapping with Alarms

Geospatial mapping is native to the ReconaSense system. GPS coordinates can be entered for Wi-Q locks as well as assets and cardholders. Geospatial mapping offers a high level of situational awareness and provides the operator with what happened and where it happened.



#### 6. Analytics-Based Reports and Graphical Dashboard

The ReconaSense Access application offers standard data-driven reports including operator and cardholder activity, event history, and access level assignment. There are also numerous analytic reports such as the arrival / departure report, cardholders utilizing an access point during a common period, and breadcrumb locations for a cardholder. In addition, the Dashboard provides the operator with a graphical view of the various hardware points including Wi-Q locks as well as other security hardware.

#### 7. Actionable Weather Alerts

With our ReconaSenseWeather integrated weather alerts, administrators can change their security stance when severe weather is detected. Based on location zip codes, the system can be programmed to automate location-specific procedures such as enable access to areas that the cardholder would not have access to under normal situations. When combined with the geospatial mapping feature, operators can quickly visualize the location as well as hardware and assets in the area. The ReconaSenseWeather alerts provide relevant, actionable information around the weather event so that critical information can be communicated across the organization.

#### 8. Access Authorization Approval Process (On-Boarding)

The access approval process allows system administrators to ensure that an access level is approved before assignment. Designated operators will be notified of the request and have the option to approve, deny, or request additional information. This feature assures that high-security access levels are only assigned once approved and eliminates the need for additional paperwork.

## MAKING SECURITY INTELLIGENT

ReconaSense helps protect people, assets, buildings and cities with its next-gen access control and converged physical security intelligence platform. ReconaSense identifies and mitigates potential threats and attacks before they happen giving security teams the ability to go beyond managing data and individual alerts to achieving true situational awareness and rapid response capabilities.



[reconasense.com](http://reconasense.com) | +1 512.220.2010 | [insider@reconasense.com](mailto:insider@reconasense.com)

©2021 ReconaSense.

ReconaSense is a registered trademarks of Tranquility Ventures. All other trademarks are the property of their respective owners.



ReconaSense is an American company headquartered in Austin, Texas.